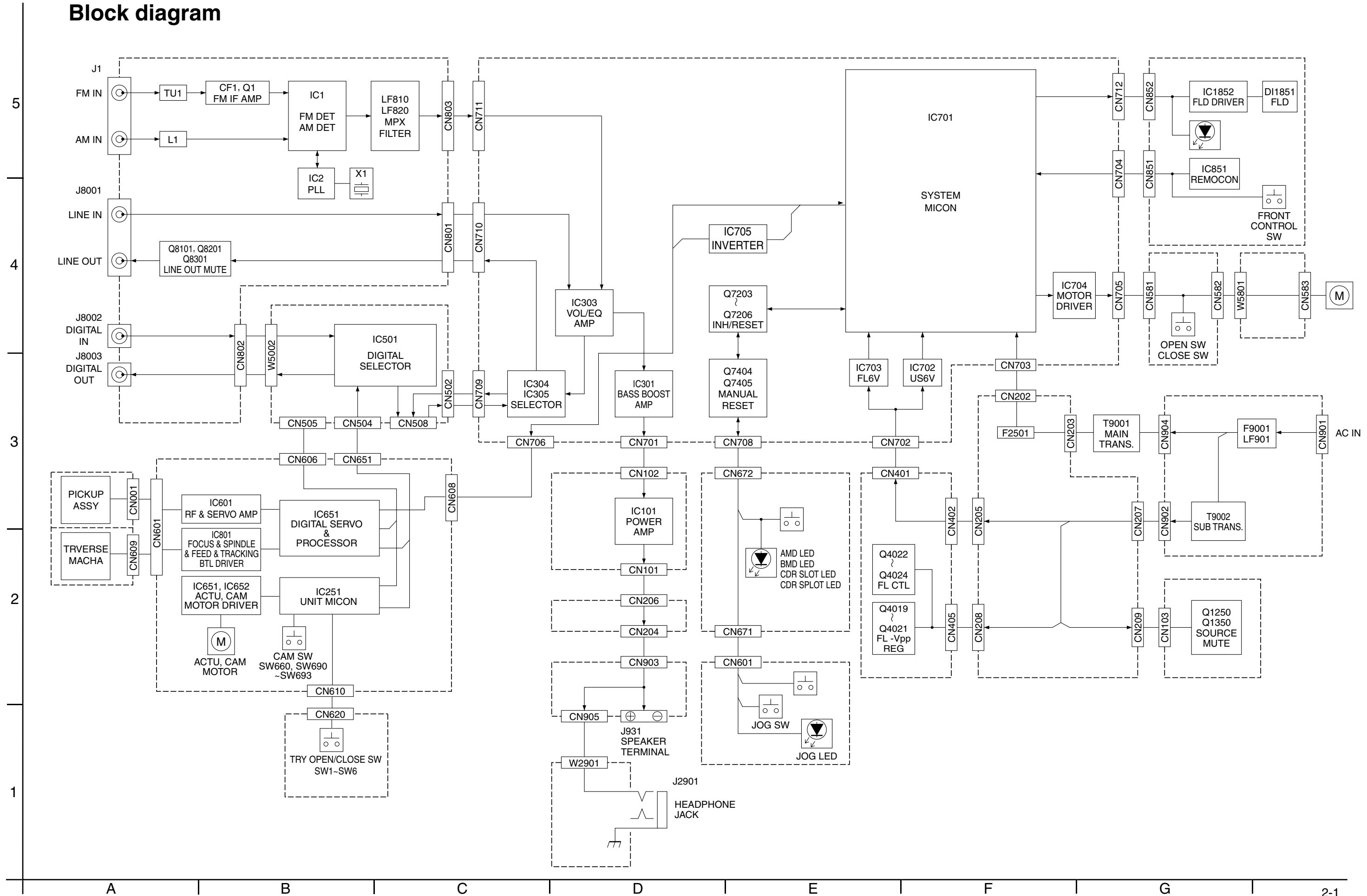


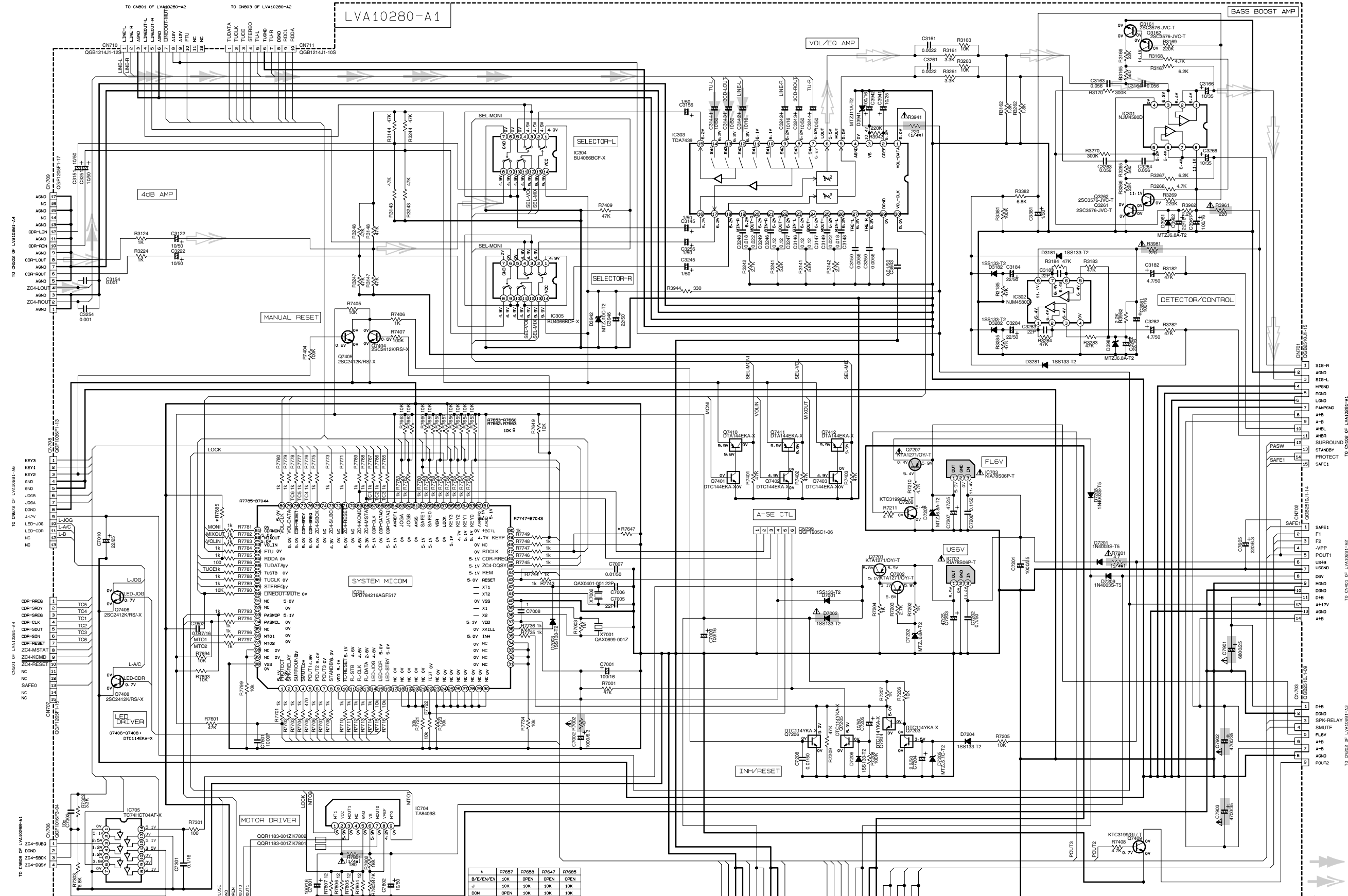
Block diagram



Standard schematic diagrams

System control section

5
4
3
2
1



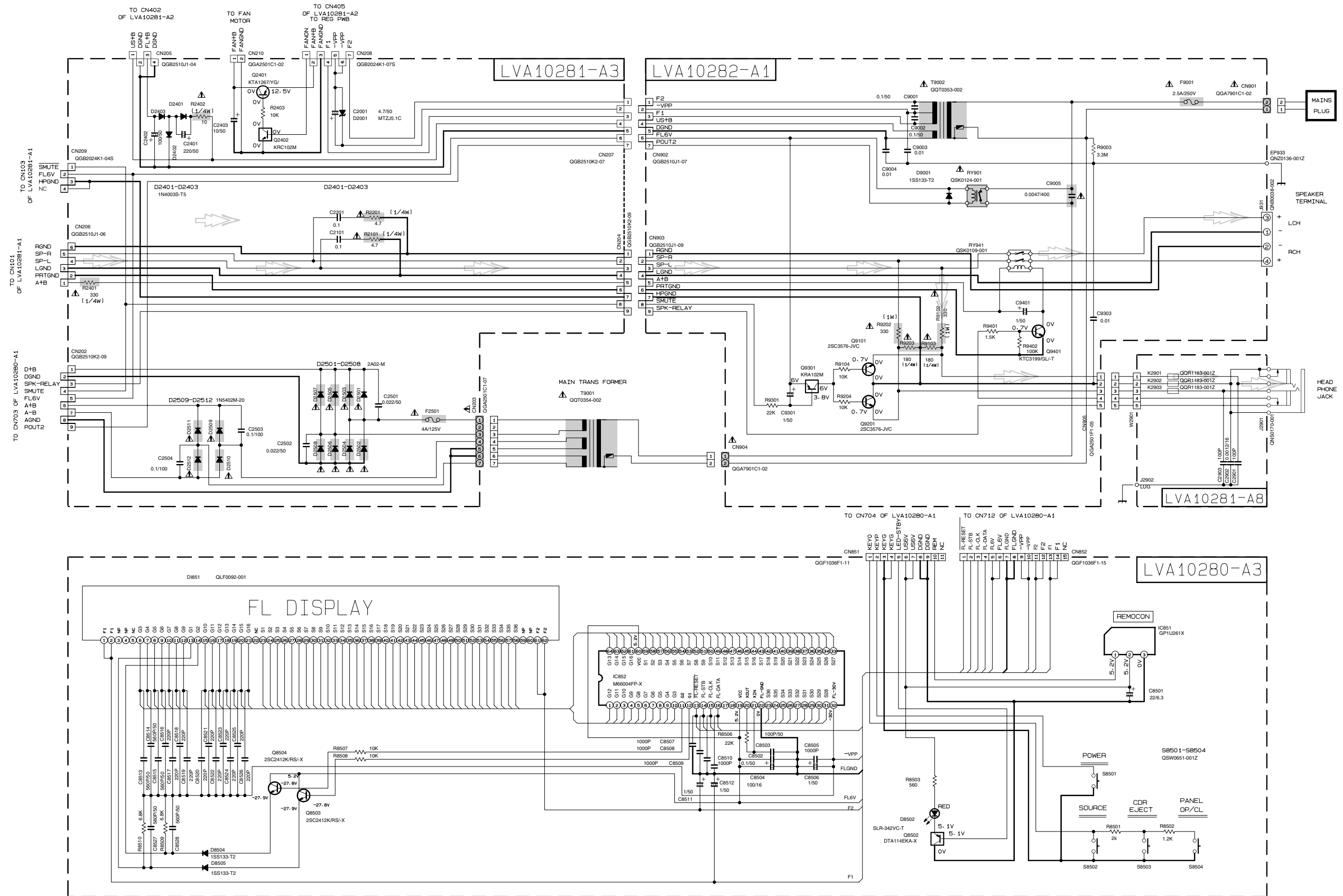
NOTES
 1. VOLTAGES ARE DC-MEASURED WITH A DIGITAL VOLT METER WITHOUT INPUT SIGNAL.
 2. CONNECTION TO ID STOP MODE.
 3. UNLESS OTHERWISE SPECIFIED, ALL RESISTANCE VALUES ARE IN OHMS.
 4. CAPACITANCE VALUES ARE IN nF (n) OR pF (p).
 5. ALL CAPACITORS ARE SHOWN IN THE FORM OF CAPACITANCE (nF/pF)/RATED VOLTAGE (V).
 6. ALL INDUCTANCE VALUES ARE IN mH (m).
 7. UNLESS OTHERWISE SPECIFIED, ALL RESISTANCE VALUES ARE IN OHMS.
 8. UNLESS OTHERWISE SPECIFIED, ALL CAPACITANCE VALUES ARE IN nF (n) OR pF (p).
 9. UNLESS OTHERWISE SPECIFIED, ALL INDUCTANCE VALUES ARE IN mH (m).
 10. UNLESS OTHERWISE SPECIFIED, ALL RESISTANCE VALUES ARE IN OHMS.

	R7657	R7658	R7647	R7685
B/E/EN/EV	10K	OPEN	OPEN	OPEN
J	10K	10K	10K	10K
DOM	OPEN	10K	10K	10K

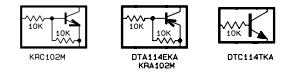
- ➔ TUNER signal
- ➔ CD signal
- ➔ CD-R signal
- ➔ LINE IN signal
- ➔ MAIN signal

⚠ Parts are safety assurance parts.
 When replacing those parts make sure to use the specified one.

FL control & Power supply section



NOTES
 1. VOLTAGES ARE DC-MEASURED WITH A DIGITAL VOLT METER WITHOUT INPUT SIGNAL.
 CONDITION: CD STOP MODE
 2. UNLESS OTHERWISE SPECIFIED:
 ALL RESISTANCE VALUES ARE IN OHM(Ω).
 ALL CAPACITANCE VALUES ARE IN PICO(F) (PF).
 ALL CAPACITORS ARE 50V CERAMIC CAPACITOR.
 ALL CAPACITANCE VALUES ARE IN A.F.(PF).
 ALL E-CAPACITORS ARE SHOWN IN THE FORM OF CAPACITANCE (μF)/RATED VOLTAGE (V).
 ALL DIMENSIONAL VALUES ARE IN MILLIMETER.
 *ALL DIMENSIONAL VALUES ARE IN MILLIMETER.
 **ALL DIMENSIONAL VALUES ARE IN MILLIMETER.
 ***ALL DIMENSIONAL VALUES ARE IN MILLIMETER.



Parts are safety assurance parts.
 When replacing those parts make sure to use the specified one.

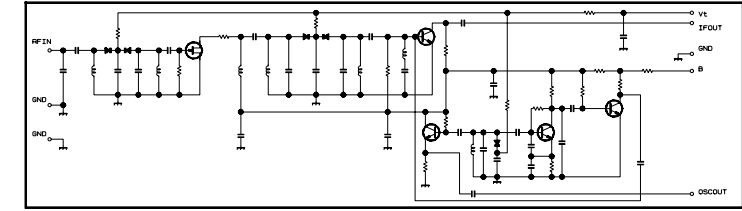


■ Tuner section

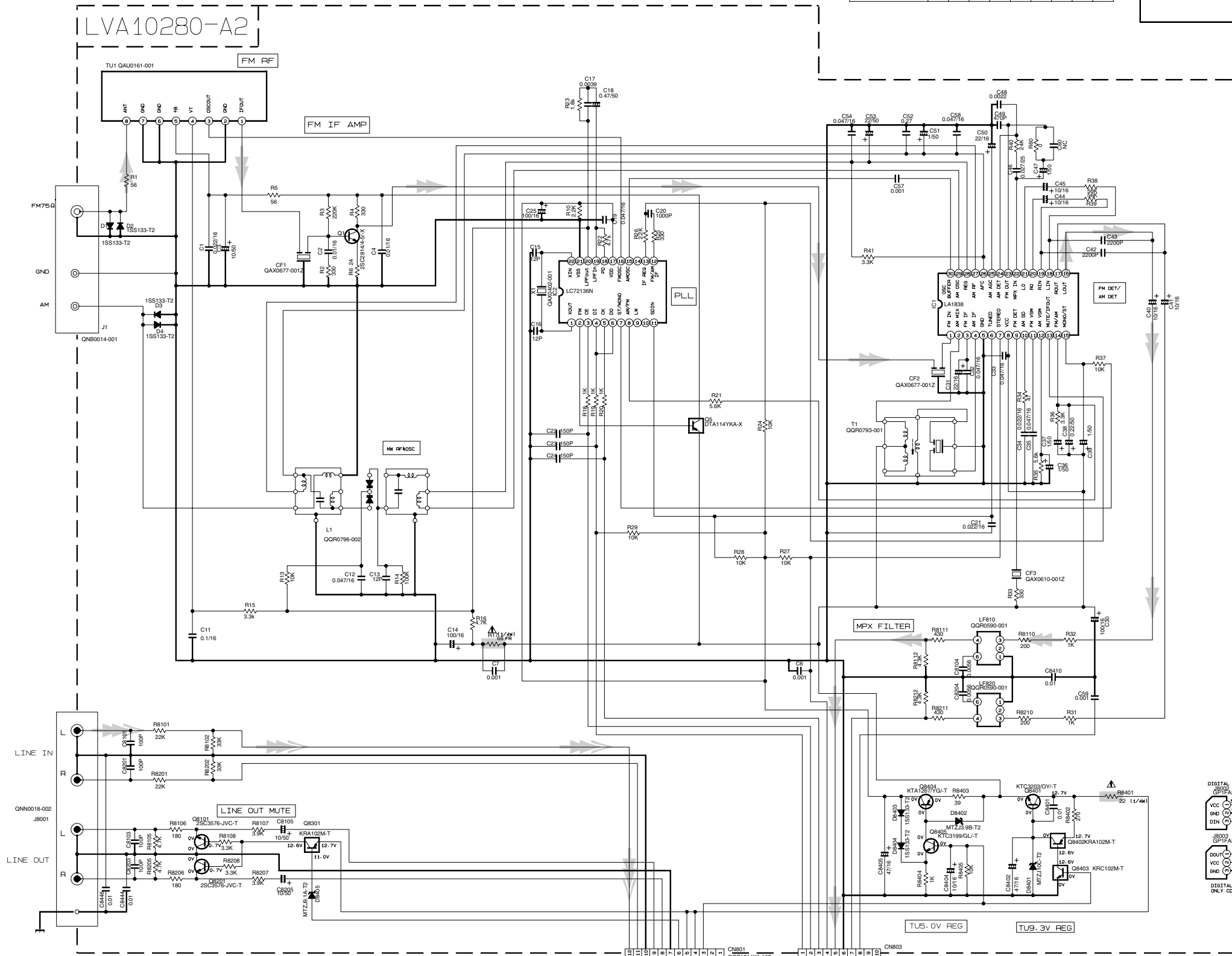
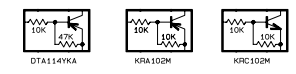
CONDITION	PIN NO.	1	2	3	4	5	6	7	8	9	10	11	12	13	14	15	16	17	18	19	20	21	22	23	24	25	26	27	28	29	30
IC1	FM NO SIGNAL	3.6	8.9	3.6	3.6	0	5.0	5.0	8.9	8.9	1.3	0.1	0	0.9	7.8	7.8	4.3	4.3	4.3	4.3	3.4	3.4	2.8	3.4	0	0	3.5	3.5	3.6	2.7	
	FM 600B STEREO	3.6	8.9	3.6	3.6	0	5.0	5.0	8.9	8.9	1.3	0.1	0	0.9	7.8	7.8	4.3	4.3	4.3	4.3	3.4	3.4	2.8	3.4	0	0	3.6	3.6	3.6	2.7	
	AM NO SIGNAL	3.5	9.0	3.5	3.5	0	5.0	5.1	9.0	2.6	1.3	0	0	0.9	4.7	5.5	4.3	4.3	4.3	3.3	3.3	2.8	3.4	0	0	0.7	0.7	3.6	3.6	2.1	
IC2	FM NO SIGNAL	2.5	0	0	5.0	4.9	5.0	7.9	7.8	3.6	6.1	5.1	0	0	0	0	2.5	5.1	0.9	0.9	3.8	0	2.3								

TR NO.	Q1	Q5
PIN NO.	E C B	E C B
FM 87.5MHz NO SIGNAL	0 7.1 0.85	8.9 8.8 0
AM 522KHz NO SIGNAL	0 0 0	9.0 0 8.9

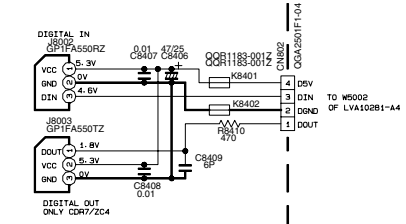
TR NO.	Q2	Q3	Q4
PIN NO.	E C B	E C B	E C B
AM 522KHz NO SIGNAL	0 0 0.7	0 0 0.7	0 0.7 0
AM 144KHz NO SIGNAL	0 0 0.3	0 0.3 0.3	3.6 3.6 3.6



- NOTES
- VOLTAGES ARE DC-MEASURED WITH A DIGITAL VOLT METER.
 - ALL RESISTORS ARE 1/16W ±5% METAL GLAZE RESISTOR.
 - ALL RESISTANCE VALUES ARE IN Ω[M].
 - ALL CAPACITANCE VALUES ARE IN p[F].
 - SI DIODES (▷) ARE 1SS133-T THAT CAN BE CHANGED TO SIMILAR DIODE SUCH AS MA165 OR HSS104J.



➔ TUNER signal
➔ LINE IN signal



⚠ Parts are safety assurance parts. When replacing those parts make sure to use the specified one.

5
4
3
2
1

A B C 2-6 D E F G

CD changer control section

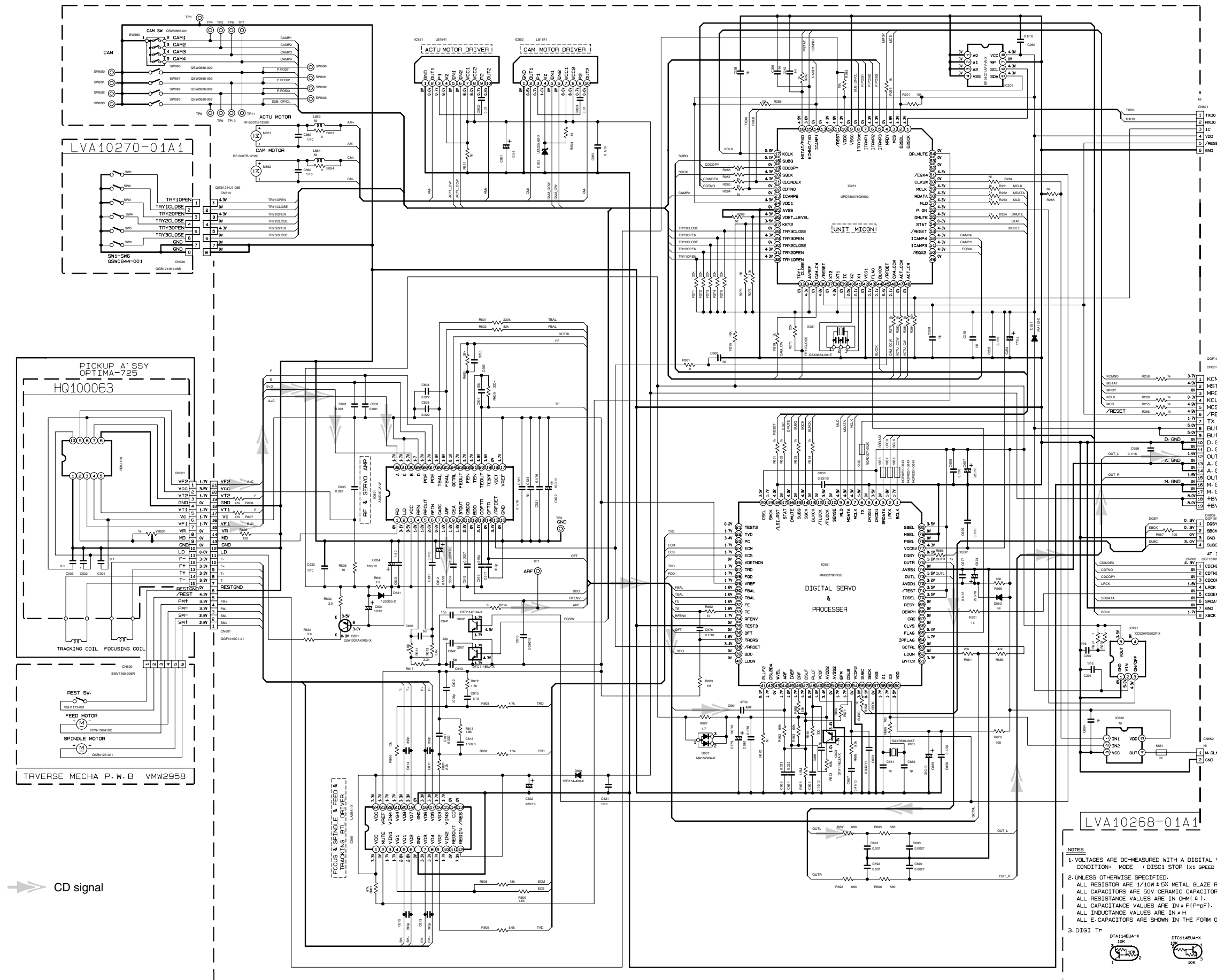
5

4

3

2

1



CD signal

FOR FLASH MICON

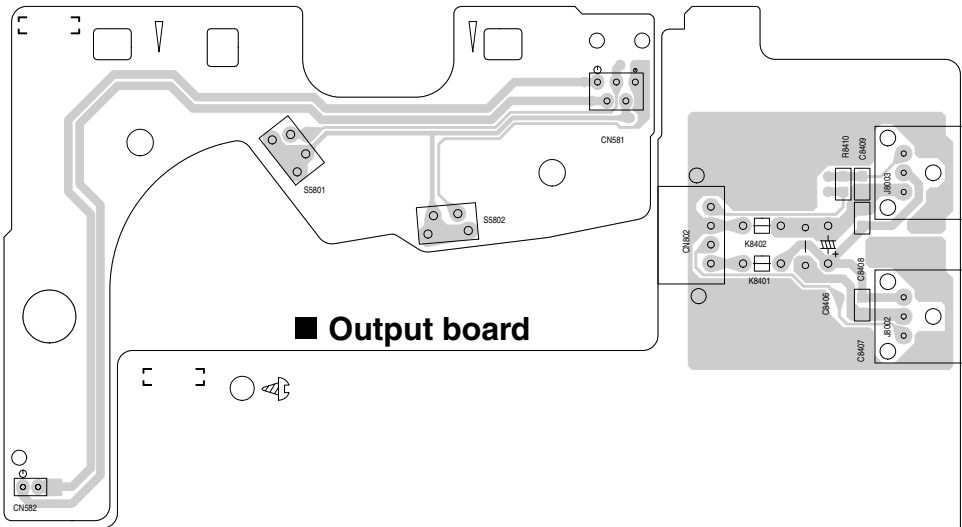
TO AMP

- NOTES
1. VOLTAGES ARE DC-MEASURED WITH A DIGITAL VOLT METER
CONDITION: MODE 1 DISC1 STOP (x1 SPEED MODE)
 2. UNLESS OTHERWISE SPECIFIED:
ALL RESISTOR ARE 1/10W ± 5% METAL GLAZE RESISTOR.
ALL CAPACITORS ARE 50V CERAMIC CAPACITOR.
ALL RESISTANCE VALUES ARE IN OHM (Ω).
ALL CAPACITANCE VALUES ARE IN nF (nF) OR pF (pF).
ALL INDUCTANCE VALUES ARE IN μH.
ALL E-CAPACITORS ARE SHOWN IN THE FORM OF CAPACITANCE (μF) / RATED VOLTAGE (V).
 3. DIGI Tr



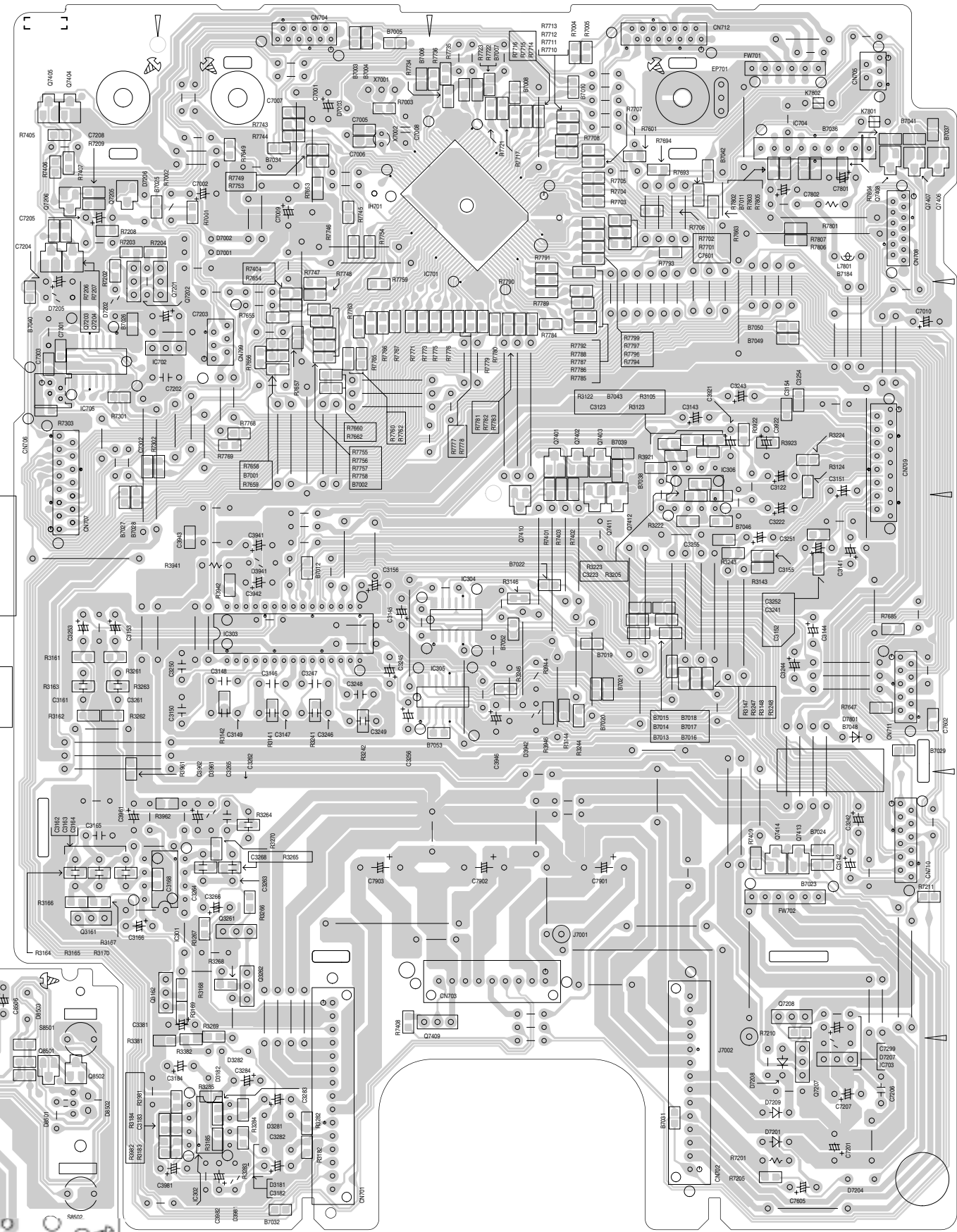
Printed circuit boards

■ Door open/close det. board

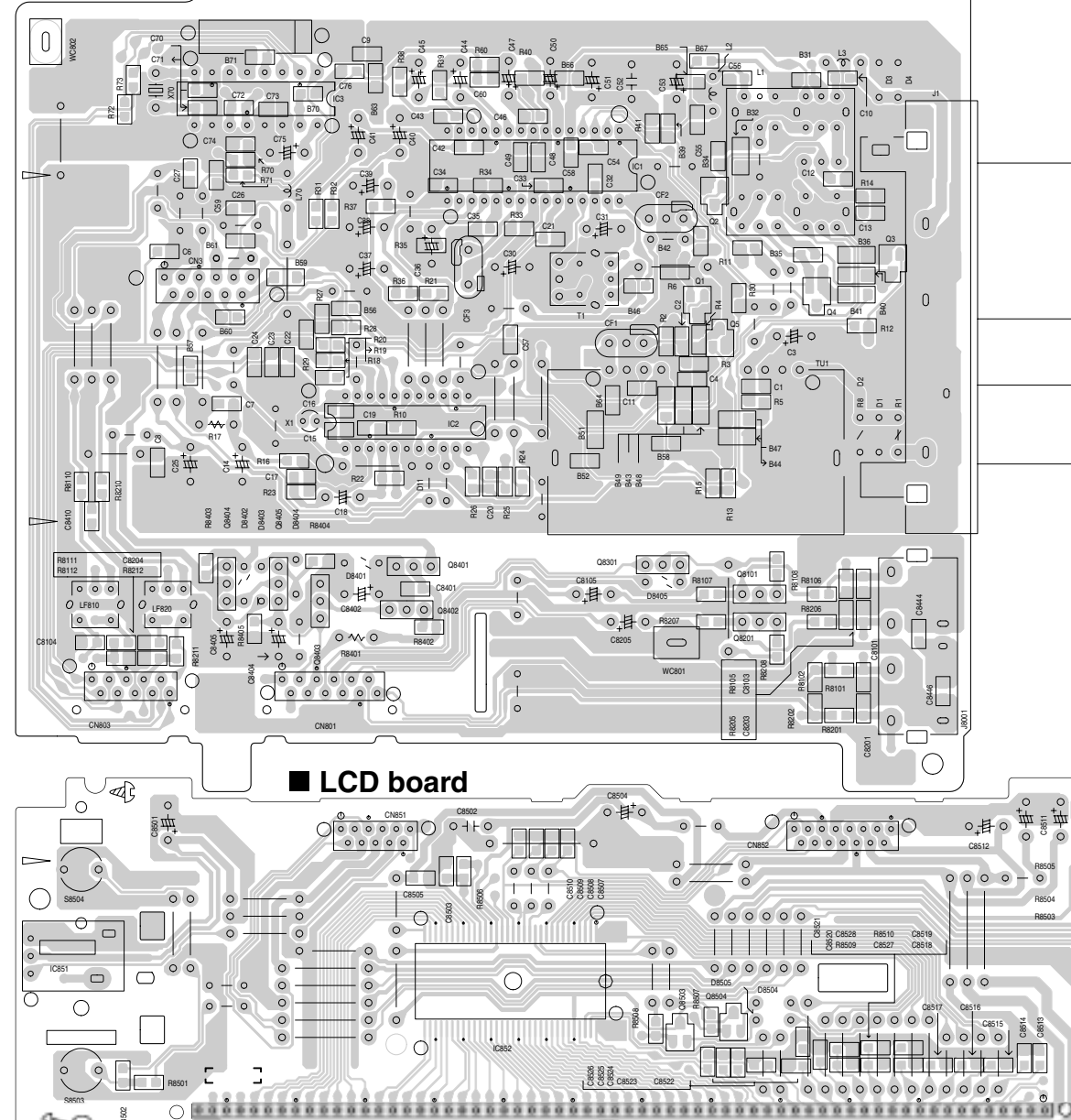


■ Output board

■ Main board



■ LCD board

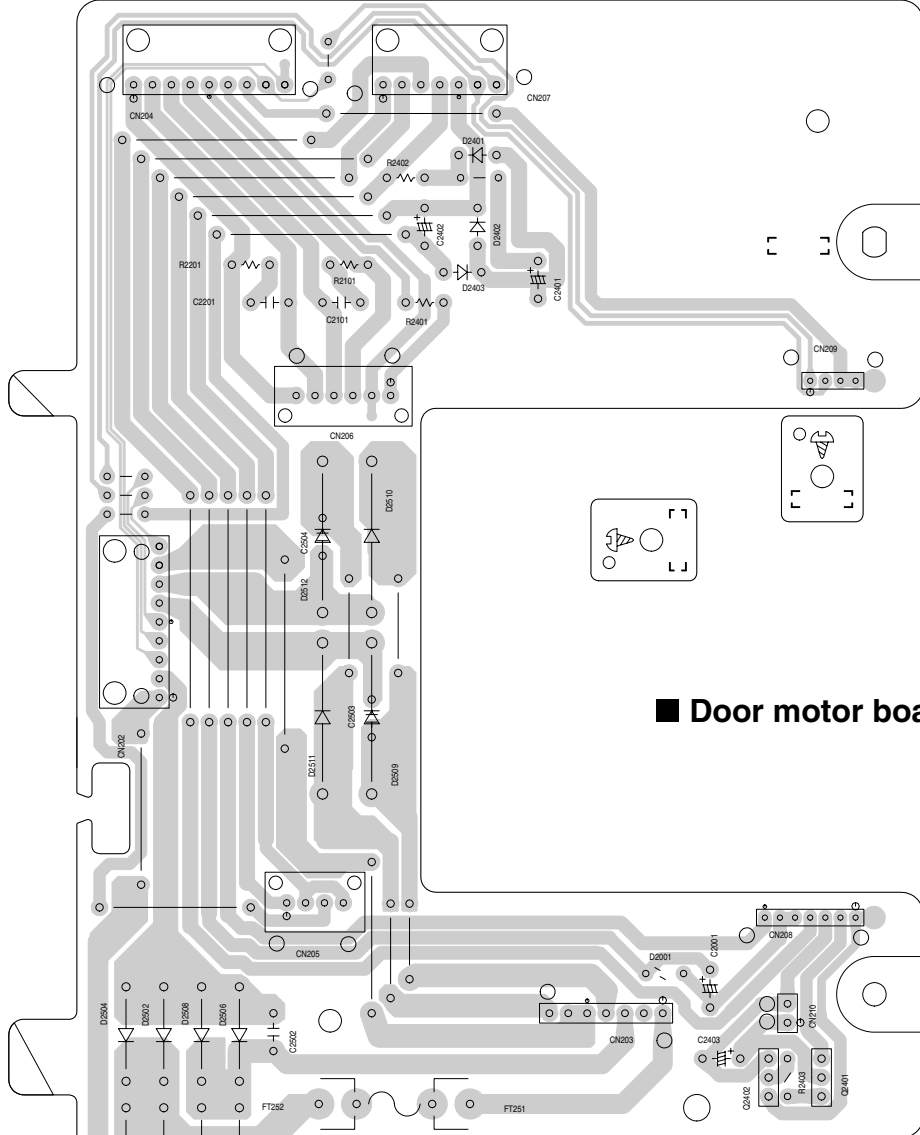


5
4
3
2
1

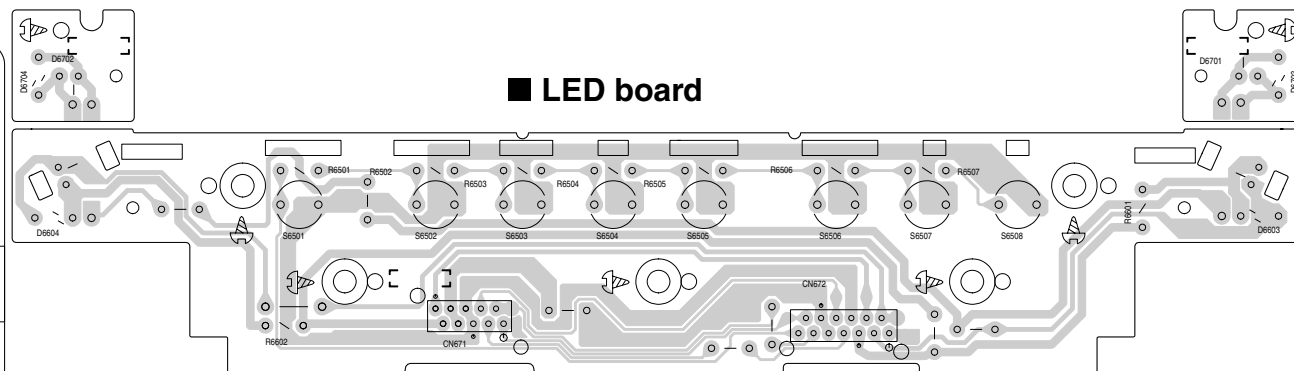
A | B | C | 2-8 | D | E | F | G

5
4
3
2
1

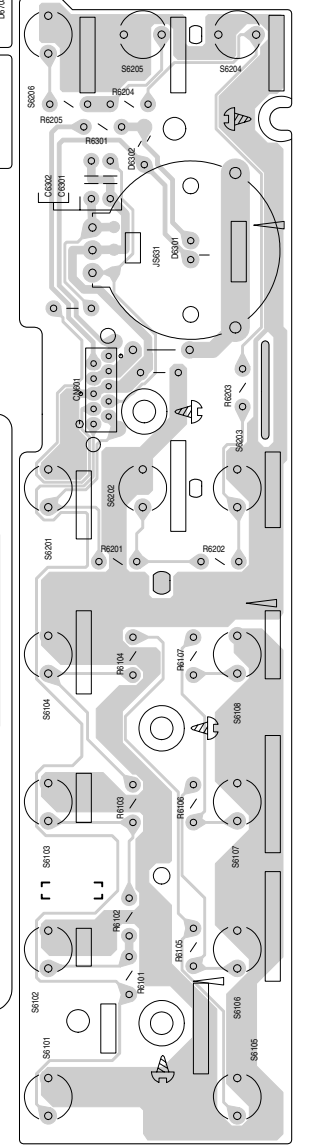
■ Power supply connection board



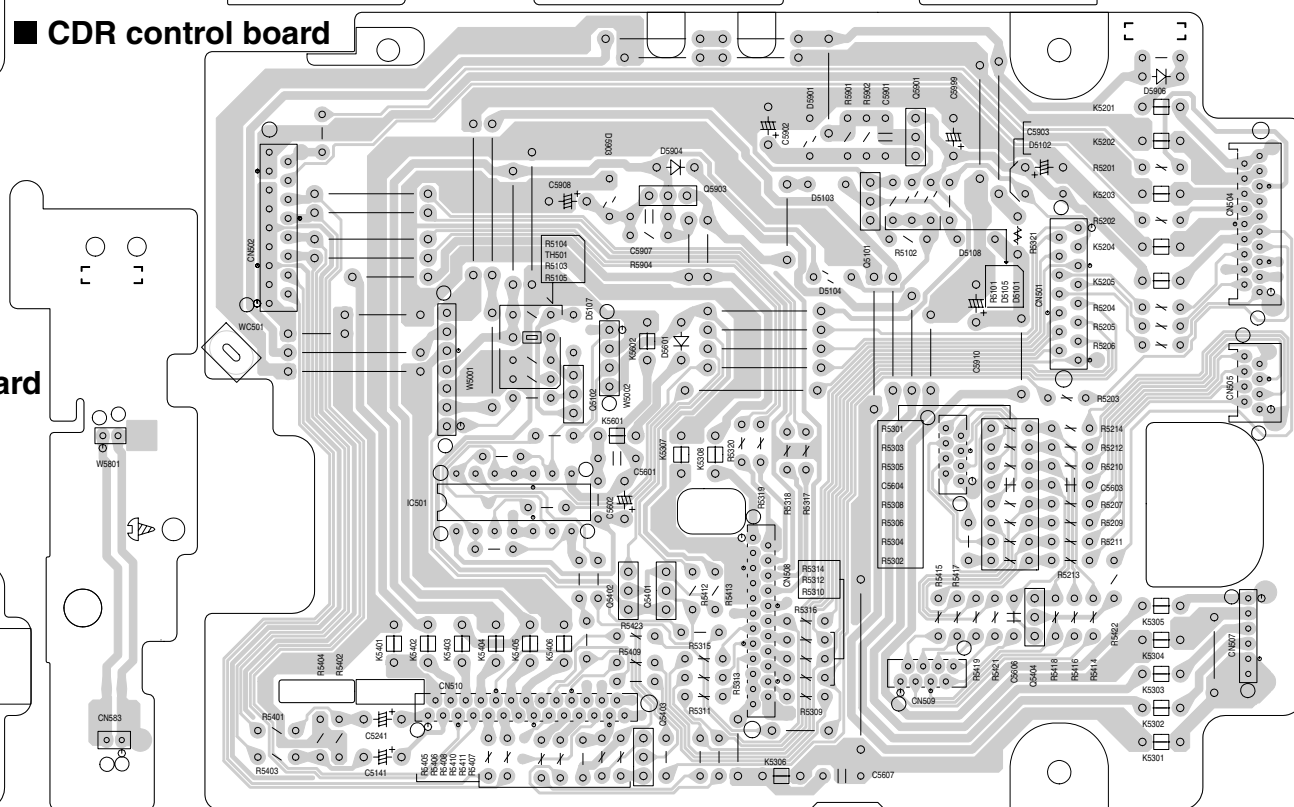
■ LED board



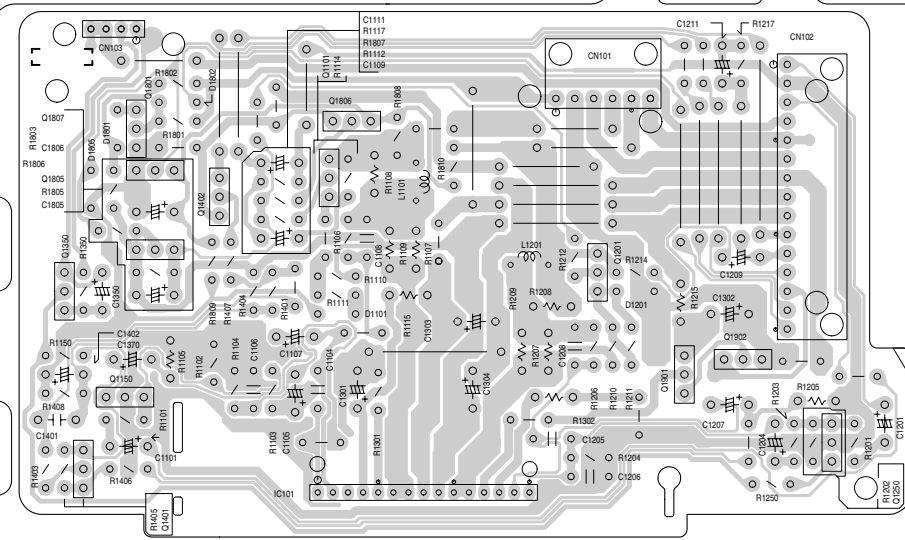
■ Operation SW board



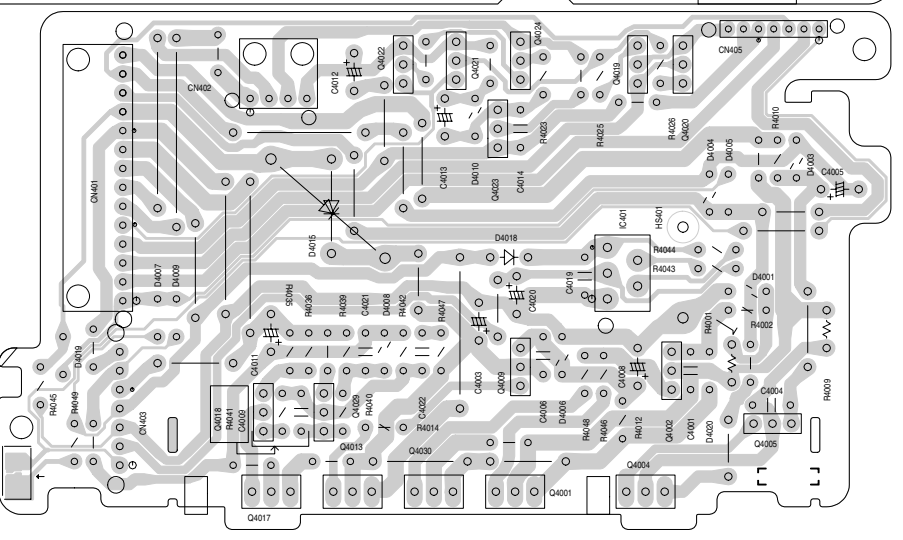
■ CDR control board



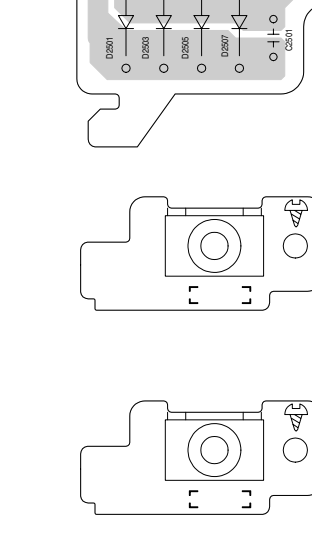
■ Door motor board



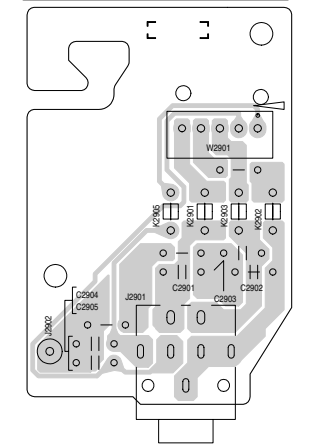
■ Power amp board(2)



■ Power amp board(1)



■ Headphone board



A B C D E F G 2-9

5

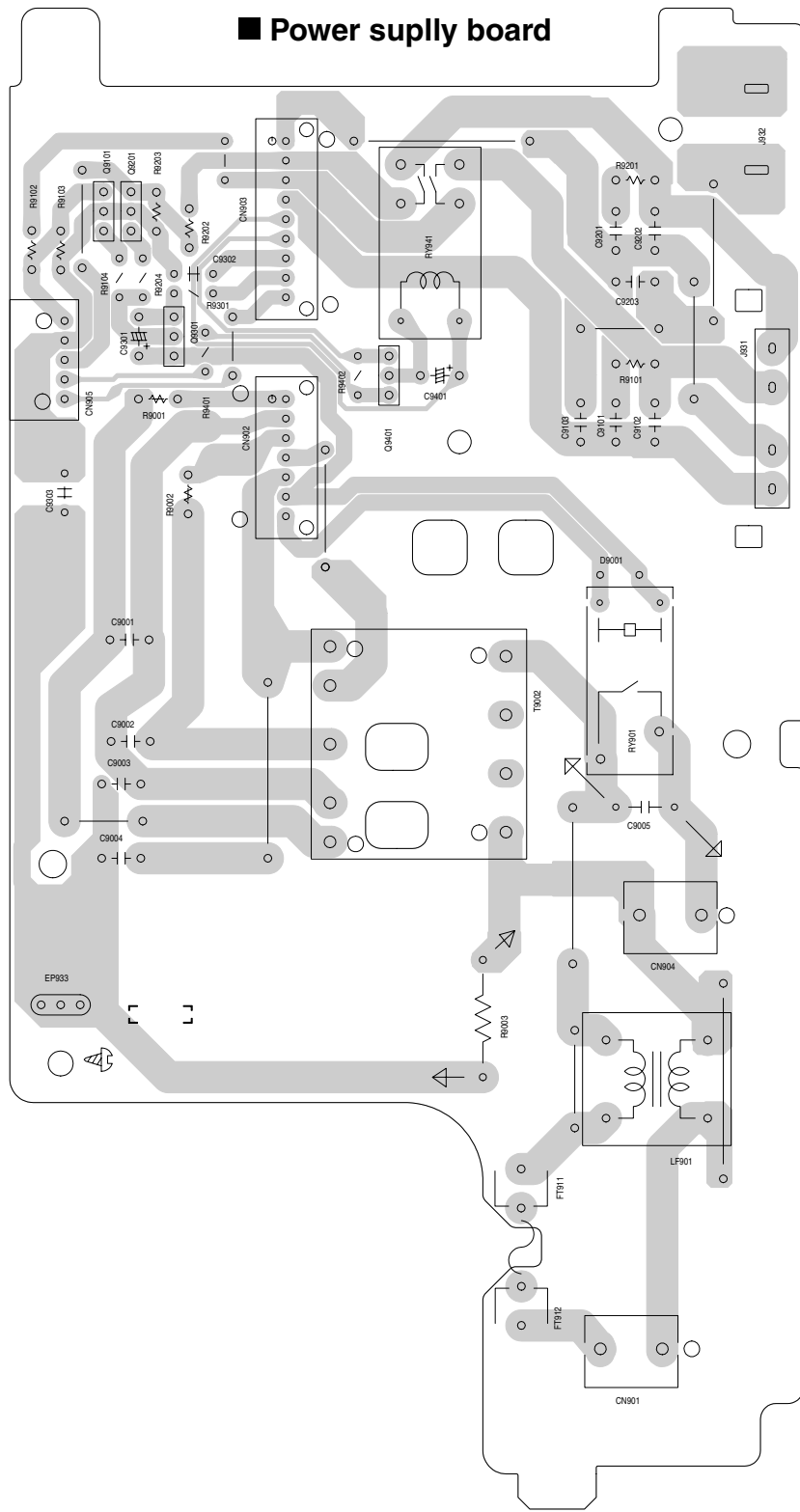
4

3

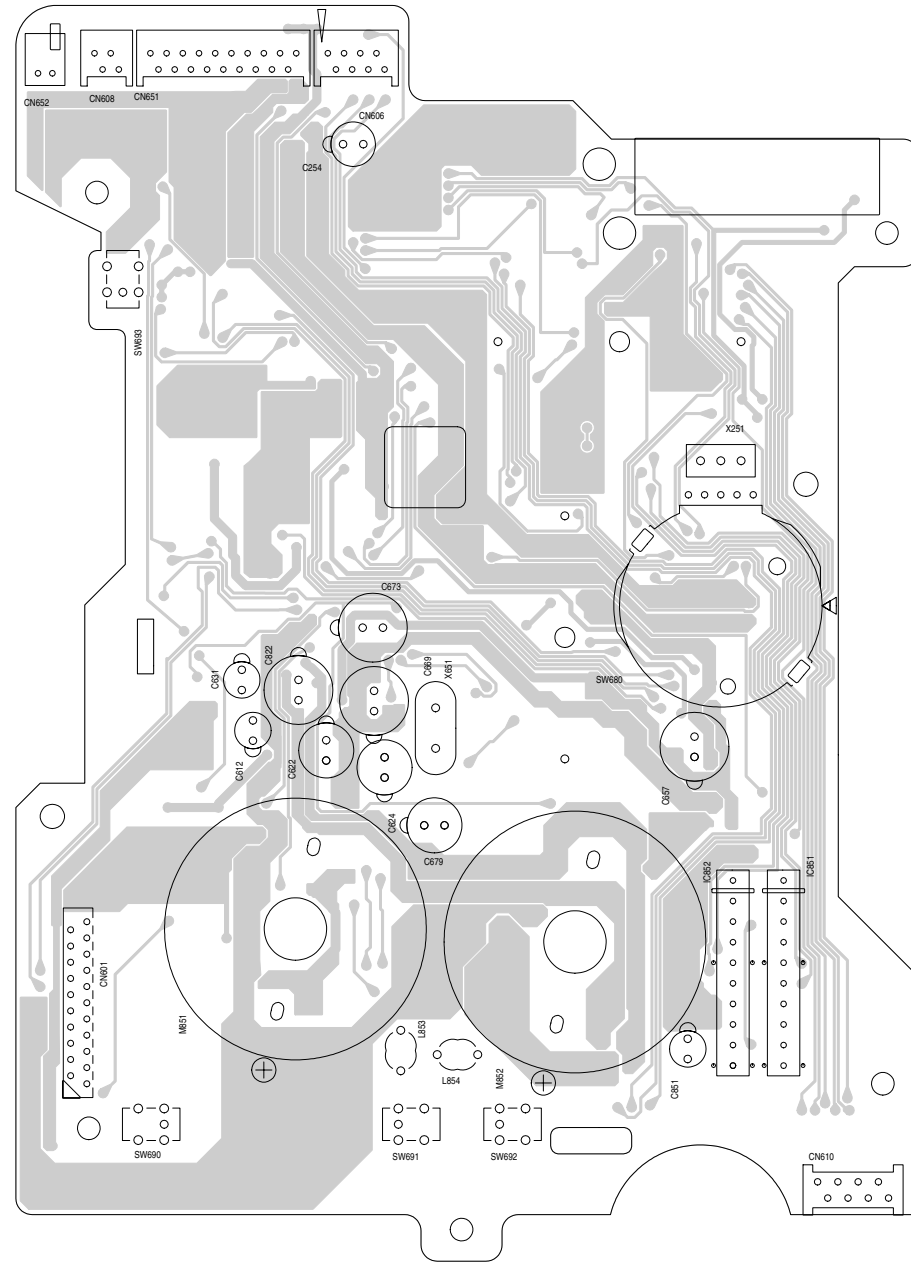
2

1

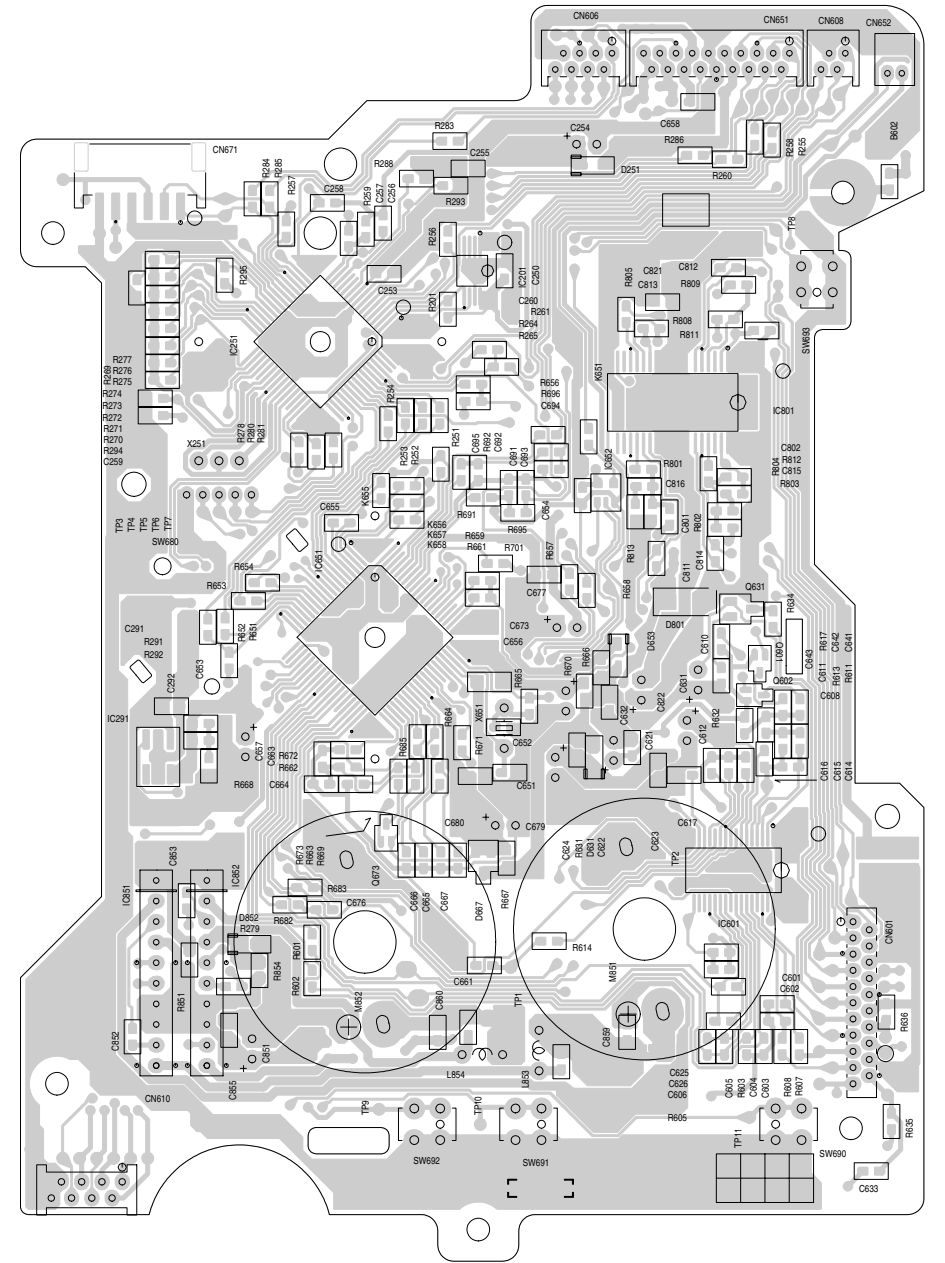
■ Power supply board



■ CD changer control board (Forward side)



■ CD changer control board (Reverse side)



A

B

C

2-10 D

E

F

G